



MV San Arcadio (+1942)

Details

general

nationality: [british](#)
 purpose: [transport](#)
 type: [tanker](#)
 propulsion: [motor vessel](#)
 date built: 1935

details

weight (tons): 7419 grt
 dimensions: 141,7 × 18,29 × 5,8 m
 engine: 8cyl diesel engine
 power: 3500 b.h.p.
 speed: 12 knots

about the loss

cause lost: [torpedo](#)
 date lost: [31/01/1942](#) [dd/mm/yyyy]
 casualties:

about people

builder: [Harland & Wolff Ltd., Belfast & Glasgow](#)
 owner: [Eagle Oil & Shipping Co. Ltd., London](#)
 captain:

about the wreck

depth:
 orientation:
 protected:
 war grave:

updates

entered by: [Allen Tony](#)
 entered: 16/05/2008
 last update: [Vleggeert Nico](#)
 last update: 28/09/2009

Position

[Allen Tony](#) 16/05/2008

latitude: 38°10'00" N
 longitude: 063°50'00" W
 division: 1'=60"
 remarks: Position is PA.
 ref. used: [Stuart Cameron, www.clydesite.co.uk](#)

[add position to my marks](#)

show neighbour. wrecks: [members only](#)
[check AIS](#)

[insert new position](#)

The Wreck today

[insert wrecksite info](#)

Pictures



[Chipchase Nick](#) 02/11/2009

builder: [Harland & Wolff Ltd.](#)

Harland and Wolff was formed in 1861 by Edward James Harland and Hamburg-born Gustav Wilhelm Wolff. Based in Belfast at Queen's Island, Harland and Wolff are a huge and very important shipbuilding



[insert new picture](#)

History

[Allen Tony](#) 16/05/2008

San Arcadio MV was a British Motor Tanker of 7,419 tons built in 1935 by Harland & Wolff Ltd, Govan, Yard No 938 for the Eagle Oil & Shipping Company. She was powered by a diesel engine. Engines by Shipbuilder. On the 31st January 1942 when on a homeward bound passage from Houston, she was torpedoed in the late afternoon in position 38° 10" North, 63° 50" West, North of Bermuda, by the Type IX B German submarine U-107 (Kapitanleutnant Harald Gelhaus).

Sank with the loss of 42 crew members including the Captain.

ref. used: [Stuart Cameron, www.clydesite.co.uk](#)

[insert new history](#)

Documents

[insert new document](#)

About Owner(s)



[Eagle Oil & Shipping Co. Ltd., London](#)
 Eagle Oil and Shipping Co. was merged into Shell International Petroleum Company in 1959.

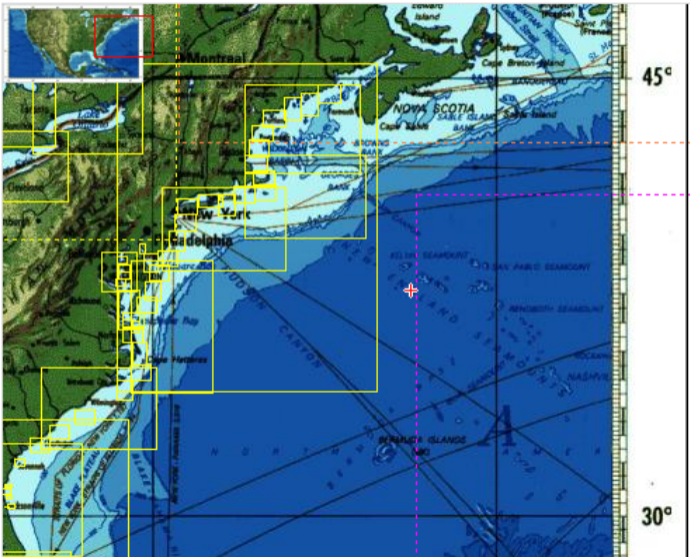
About Builder(s)



[Harland & Wolff Ltd., Belfast & Glasgow](#)
 Harland and Wolff was formed in 1861 by Edward James Harland and Hamburg-born Gustav Wilhelm Wolff. Based in Belfast at Queen's Island, Harland and Wolff are a huge and very important shipbuilding company. The shipbuilding complex is only one of two yards left in the U.K. capable of building large merchant ships. The yard was most well known for building high-class transatlantic passenger liners and was considered to be the best in the world. The company has built over 1700 ships at four yards and has been in operation for over 135 years.



LAT: 46°38,9XXN LON: 49°54,7XXW



45°

30°